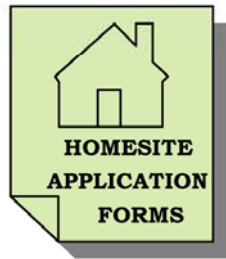


# HOMESITE LEASE FLOW CHART

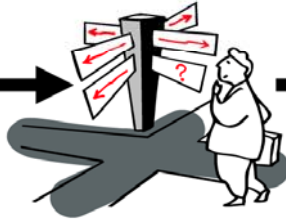
HOMESITE LEASE 200RL



Application obtained from Sub-Office NLD



Applicant fills out application with information and signs application in BLACK INK



Map of proposed HS Location drawn by Application in INK



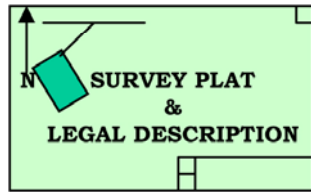
Permittees are contacted For His/her consent



\$15.00 money order filing fee



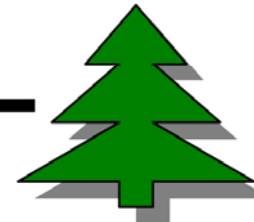
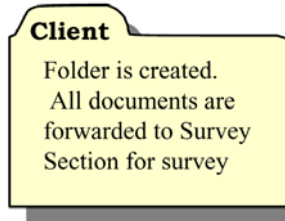
Homesite Application Package is submitted to NLD



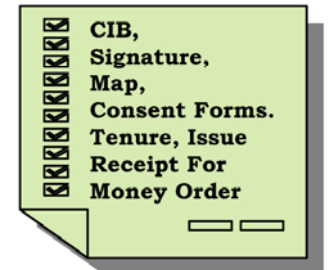
Submit to RLS for stamp and certification and return to homesite



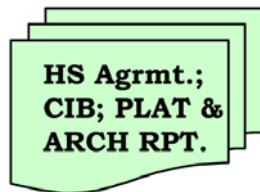
Homesite location is Surveyed with rebar corners



If HS is within Forest areas HS will be referred to NN Forestry Dept.



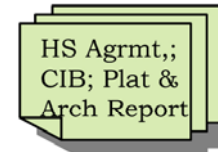
NLD will check HS for all information



Homesite Lease is assemble and forwarded to NLD Dir. for approval



NLD Dir. Reviews HS package and signs on behalf of the NN

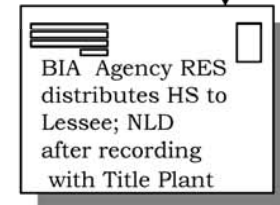


Homesite Lease Package is sent to BIA, Agency Real Estate Services



Thoroughly reviewed by Agency RES and Area RES then package forwarded to Regional Director, for final BIA approval.

It is the applicants responsibility to obtain an Archeological Clearance and submit the approved HPD's Cultural Compliance Form



NLD-Navajo Land Dept; HS-Home Site; RLS-Registered Land Surveyor; BIA-Bureau of Indian Affairs; RES-Real Estate Services; NN-Navajo Nation; HPD-Historic Preservation Dept.